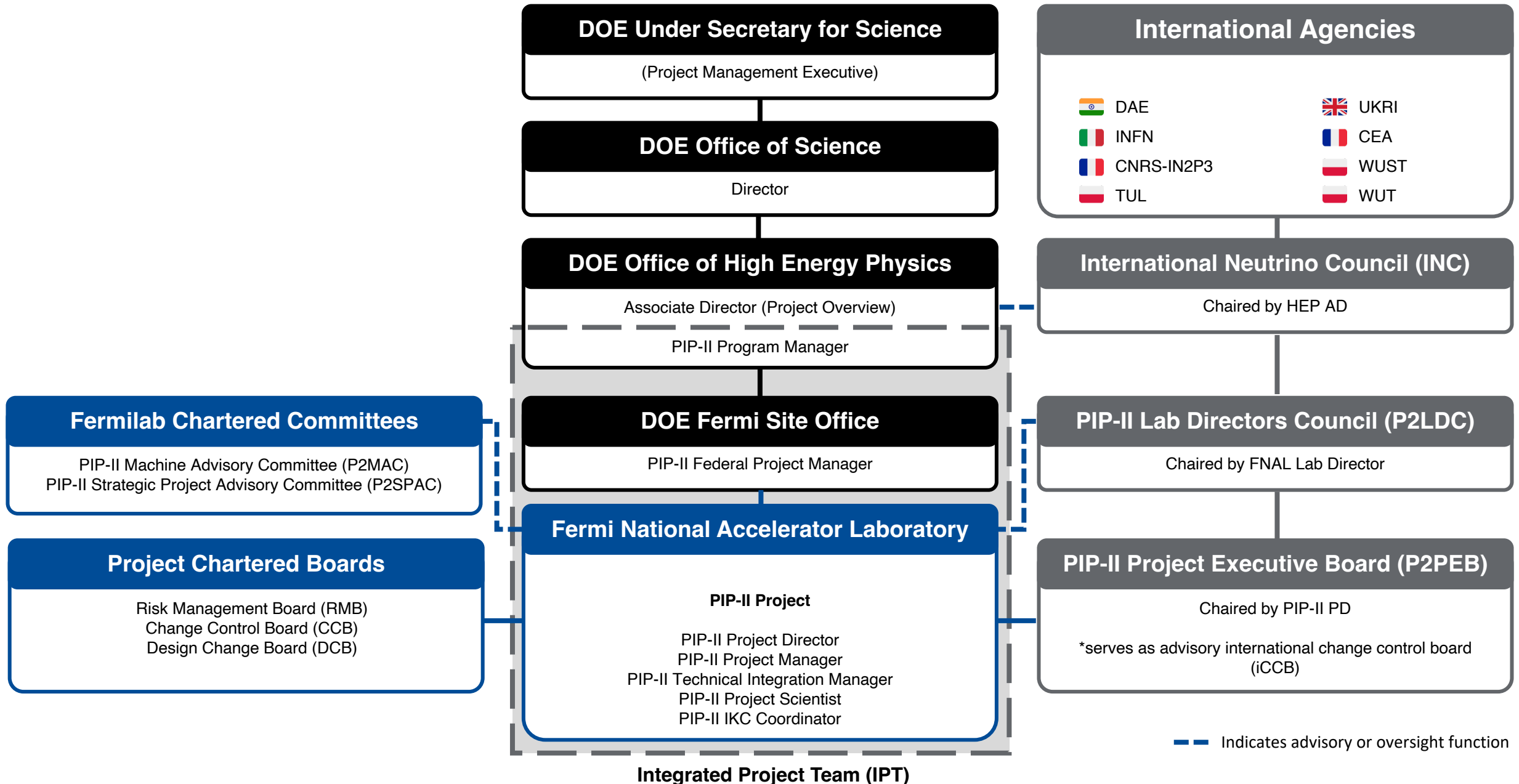


PIP-II Management Organization & Governance Chart

11.27.2023

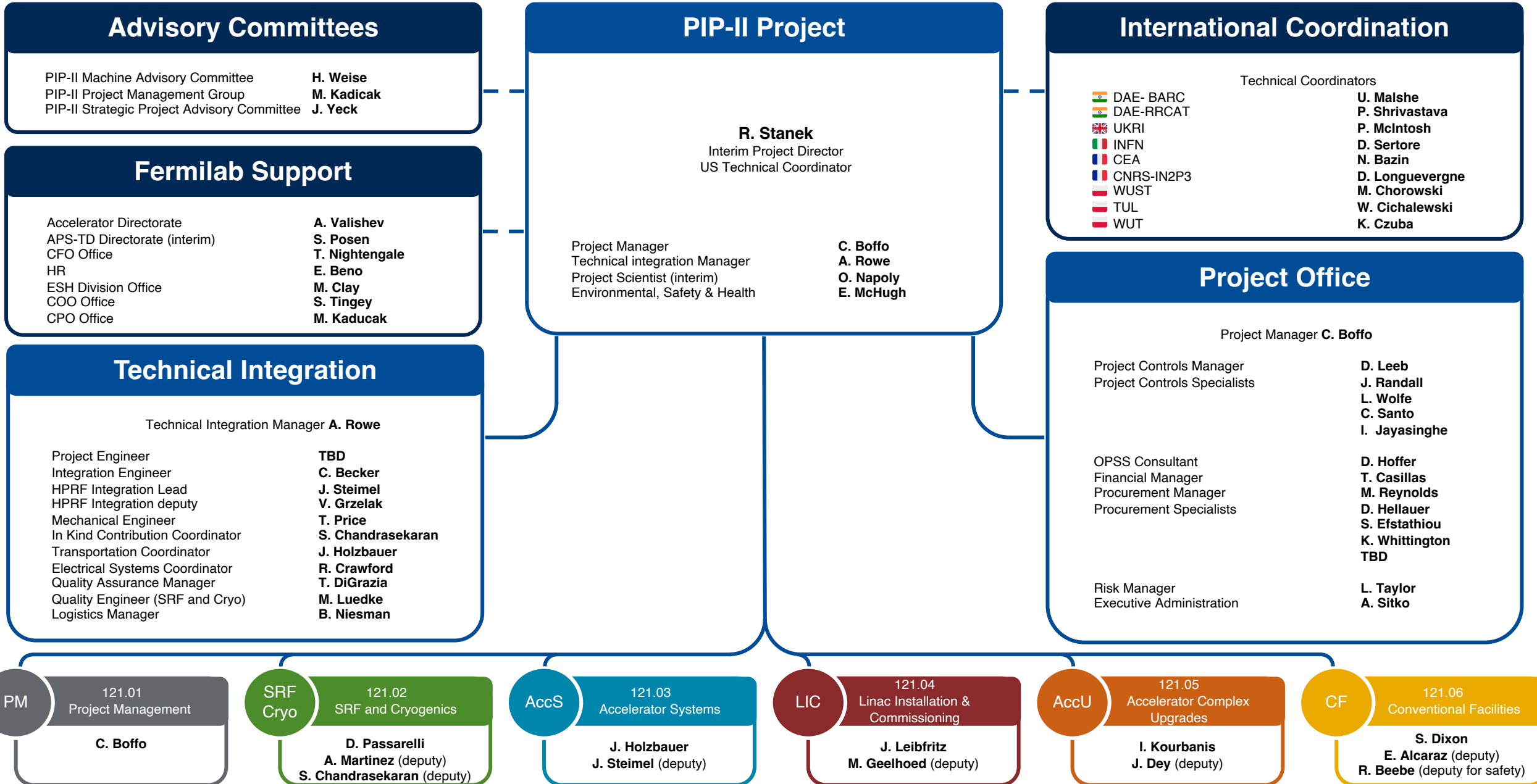


— — Indicates advisory or oversight function

PIP-II Project Management and L2 Systems and Managers



11.27.2023



PM 121.01 Project Management

C. Boffo

SRF Cryo 121.02 SRF and Cryogenics

D. Passarelli
A. Martinez (deputy)
S. Chandrasekaran (deputy)

121.02.01 Project Management

D. Passarelli

121.02.02 HWR Cryomodule

J. Ozelis

121.02.03 SSR Cryomodules

M. Parise
V. Roger (deputy)

121.02.04 650 Cryomodules

J. Ozelis

121.02.05 Cryogenic Plant

A. Martinez
Y. Jia (deputy)

121.02.06 Cryogenic Distribution

R. Duhley

AccS 121.03 Accelerator Systems

J. Holzbauer
J. Steimel (deputy)

121.03.01 Project Management

J. Holzbauer

121.03.02 MPS

A. Warner

121.03.03 HPRF, RF distribution

J. Steimel
V. Grzelak (deputy)

121.03.04 LLRF

P. Varghese (interim)

121.03.05 Magnets-PS

B. Hanna

121.03.06 Vacuum

R. Campos
L. Nobrega (deputy)

121.03.07 Controls

D. Nicklaus

121.03.08 Safety Systems

R. Zifko

121.03.09 Instrumentation

V. Scarpine

LIC 121.04 Linac Installation & Commissioning

J. Leibfritz
M. Geelhoed (deputy)

121.04.01 Project Management

J. Leibfritz

121.04.02 WFE

L. Prost

121.04.03 Test Infrastructure

J. Leibfritz

121.04.04 Building Infrastructure

M. Ball

121.04.05 Linac Installation

C. Baffes

121.04.06 Beam Commissioning

D. Crawford

121.04.07 Accelerator Physics

A. Shemyakin

AccU 121.05 Accelerator Complex Upgrades

I. Kourbanis
J. Dey (deputy)

121.05.01 Project Management

I. Kourbanis

121.05.02 Transfer line- Beam absorber

M. Xiao

121.05.03 Transfer line installation

D. Morris

121.05.04 Booster

D. Johnson

121.05.05 MI-RR

J. Dey

CF 121.06 Conventional Facilities

S. Dixon
E. Alcaraz (deputy)
R. Beebe (deputy for safety)

121.06.01 Project Management

S. Dixon

121.06.02 Site Preparation

R. Wielgos

121.06.03 Cryoplant Building

S. Dixon

121.06.04 Utility Plant

E. Alcaraz

121.06.05 Linac COmplex

E. Alcaraz

121.06.06 Booster Connection

E. Alcaraz



Wroclaw University of Science and Technology

PIP-II L3 Systems And Managers

11.27.2023



PM 121.01
Project Management
C. Boffo

SRF Cryo 121.02
SRF and Cryogenics
D. Passarelli

AccS 121.03
Accelerator Systems
J. Holzbauer

LIC 121.04
Linac Installation & Commissioning
J. Leibfritz

AccU 121.05
Accelerator Complex Upgrades
I. Kourbanis

CF 121.06
Conventional Facilities
S. Dixon

121.02.01
Project Management
D. Passarelli

121.02.02
HWR Cryomodule
J. Ozelis

121.02.03
SSR Cryomodules
M. Parise

121.02.04
650 Cryomodules
J. Ozelis

121.02.05
Cryogenic Plant
A. Martinez

121.02.06
Cryogenic Distribution
R. Duhley

121.03.01
Project Management
J. Holzbauer

121.03.02
MPS
TBD

121.03.03
HPRF, RF distribution
J. Steimel

121.03.04
LLRF
S. Humphrey

121.03.05
Magnets-PS
B. Hanna

121.03.06
Vacuum
R. Campos

121.03.07
Controls
S. Humphrey

121.03.08
Safety Systems
R. Zifko

121.03.09
Instrumentation
S. Humphrey

121.04.01
Project Management
J. Leibfritz

121.04.02
WFE
L. Prost

121.04.03
Test Infrastructure
J. Leibfritz

121.04.04
Building Infrastructure
M. Geelhoed

121.04.05
Linac Installation
M. Geelhoed

121.04.06
Beam Commissioning
D. Crawford

121.04.07
Accelerator Physics
D. Crawford

121.05.01
Project Management
I. Kourbanis

121.05.02
Transfer line- Beam absorber
M. Dinnon

121.05.03
Transfer line installation
M. Dinnon

121.05.04
Booster
M. Dinnon

121.05.05
MI-RR
M. Dinnon

121.06.01
Project Management
S. Dixon

121.06.02
Site Preparation
S. Dixon

121.06.03
Cryoplant Building
S. Dixon

121.06.04
Utility Plant
S. Dixon

121.06.05
Linac COmplex
S. Dixon

121.06.06
Booster Connection
S. Dixon



Wrocław University of Science and Technology



PIP-II CAMs

11.27.2023